

INSTRUCTION MANUAL

PD-26 Pedestal Drill (240V) 31.5mm Drill Capacity 3MT



D152

I SPECIFICATIONS

Motor	380V/50Hz	220V/50Hz	120V/60Hz
INPUT HP (W)	1.5 (1100)	1.5 (1100)	1.5 (1100)
Speed r.p.m (r/min)	1400	1400	1700
No. of Drill Speeds	12	12	12
Speed Range r.p.m (r/min)	110-2880	110-2880	140-3560
Drilling Capacity	28mm / 32mm		
Chuck Capacity	20mm		
Spindle Taper	MT3 / MT4		
Table Type	Square - Wet		
Table Dimensions	425×475 (mm)		
Table T-Slot Dimensions	3×15×355 (mm)		
Max. Spindle Travel	120mm		
Max. Dist. Chuck to Table	610mm		
Max. Dist. Chuck to Base	1095mm		
Dist. Column to Chuck Centre	257mm		
Overall Dimensions	1700×780×475 (mm)		
Base Size	450×575 (mm)		
Weight (NW/GW)	144 / 150 kg		

II General Safety Instructions for Power Tools

1. KNOW YOUR POWER TOOL

Read and understand the owner's manual and labels affixed to the tool. Learn its application and limitations as well as the specific potential hazards peculiar to this tool.

2. GROUND ALL TOOLS

This tool is equipped with an approved 3-conductor cord and a 3-prong grounding type plug to fit the proper grounding type receptacle. The green conductor in the cord is the grounding wire. Never connect the green wire to a live terminal.

3. KEEP GUARDS IN PLACE

In working order, and in proper adjustment and alignment.

4. WEAR PROPER APPAREL

Do not wear loose clothing, gloves, neckties, or jewelry (rings, wrist watches) to get caught in moving parts. Wear protective hair covering to contain long hair. Roll long sleeves above the elbow.

5. USE SAFETY GOGGLES

6. KEEP WORK AREA CLEAN

Cluttered areas and benches invite accidents. Floor must not be slippery due to wax or sawdust.

7. KEEP CHILDREN AWAY

III Unpacking and checking contents

WARNING: To avoid injury from unexpected starting or electrical shock, do not plug the power cord into a source of power. This cord must remain unplugged whenever you are working on the drill press.

WARNING: To avoid fire or toxic reaction, never use gasoline, naphtha or similar highly volatile solvents.

This Drill Press is shipped complete in one box.

1. Unpacking and Checking Contents

- a. Separate all "loose parts" from packaging materials and check each item with "Table of Loose parts" to make sure all items are accounted for, before discarding any packing material.

Warning: If any parts are missing, do not attempt to assemble drill press, plug in the power cord, or turn the switch on until the missing parts are obtained and are installed correctly.

2. Remove the protective oil that is applied to the table and column. Use any ordinary household type grease and spot remover.

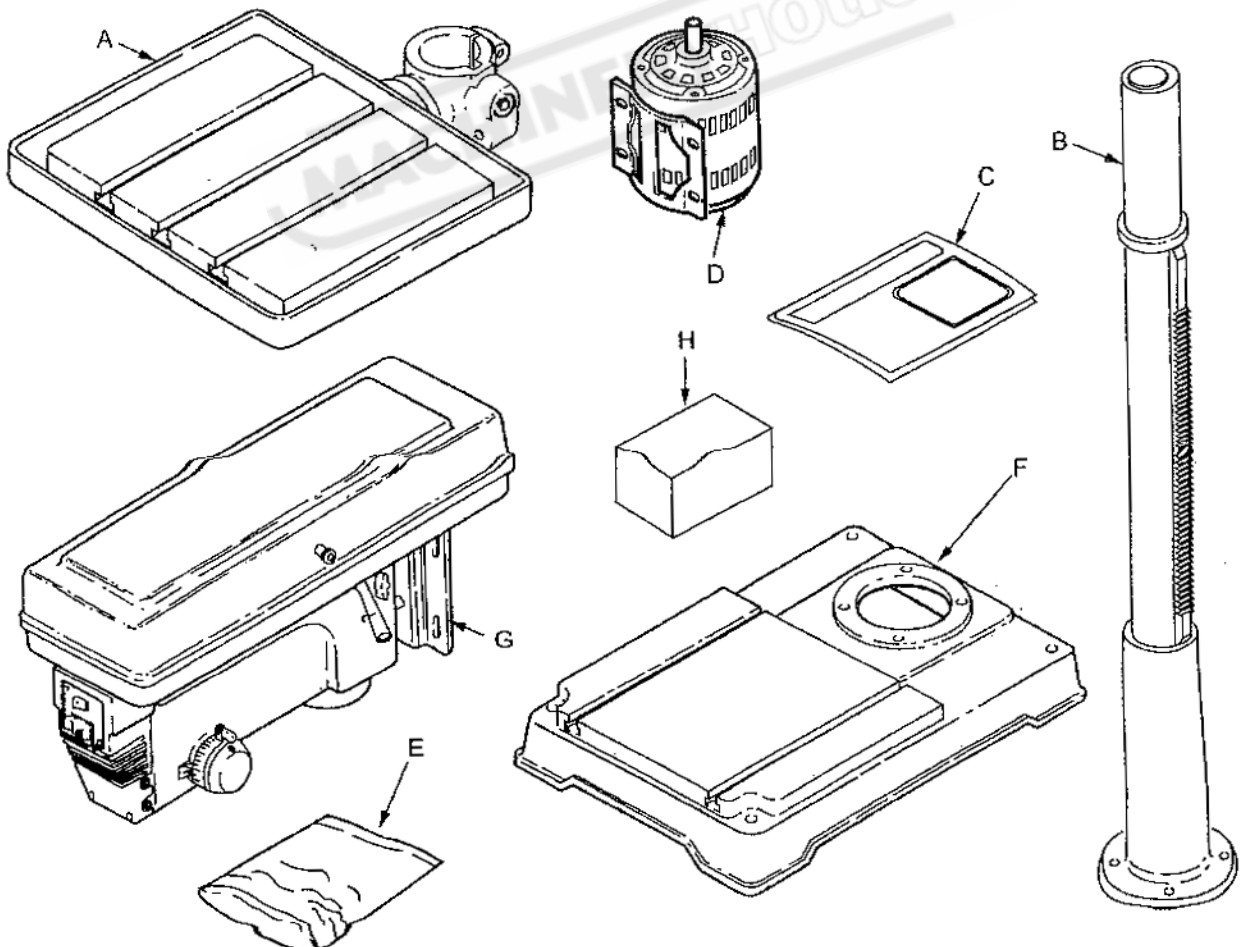
3. Apply a coat of paste wax to the table and column to prevent rust. Wipe all parts thoroughly with a clean dry cloth.

TABLE OF LOOSE PARTS

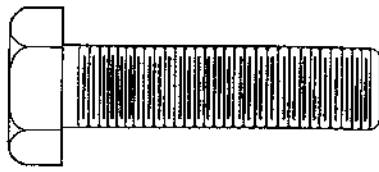
Item	Description	Qty.
A	Table-.....	1
B	Column Support Asm-.....	1
C	Owner's Manual-.....	1
D	Motor-.....	1
E	Bag of Loose Parts-.....	1
F	Base-.....	1
G	Head Asm-.....	1
H	Box of Loose Parts-.....	1

Number varies: bags can contain other smaller bags.

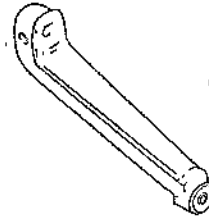
Note: To make assemble easier keep contents of each bag together and separate from contents of other bags.



List of loose parts in the box and bags



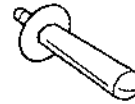
M12×40
Hex head screw(4)



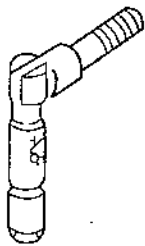
Crank (with set screw) (1)



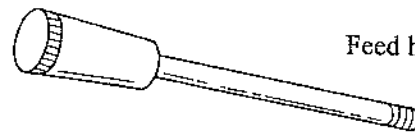
M5×12
Pan head screw (1)



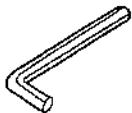
Handle crank (1)



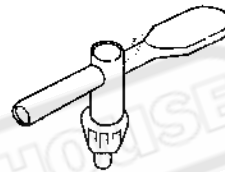
Clamp-column lock (1)



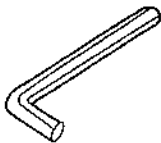
Feed handle (3)



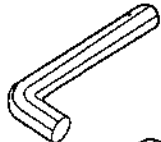
3 Hex "L" wrench (1)



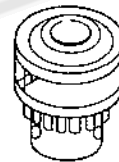
Key-chuck (1)



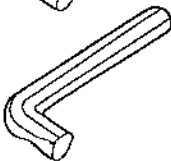
4 Hex "L" wrench (1)



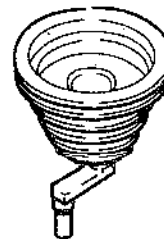
5 Hex "L" wrench (1)



Chuck (1)



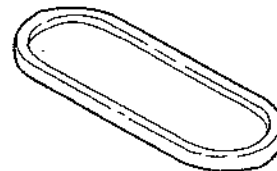
6 Hex "L" wrench (1)



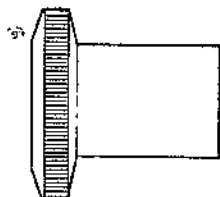
Idler pulley assembly (1)



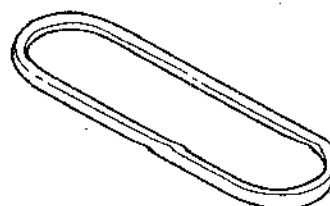
Key - drift (1)



Belt "V" A29 (1)



Knob (1)

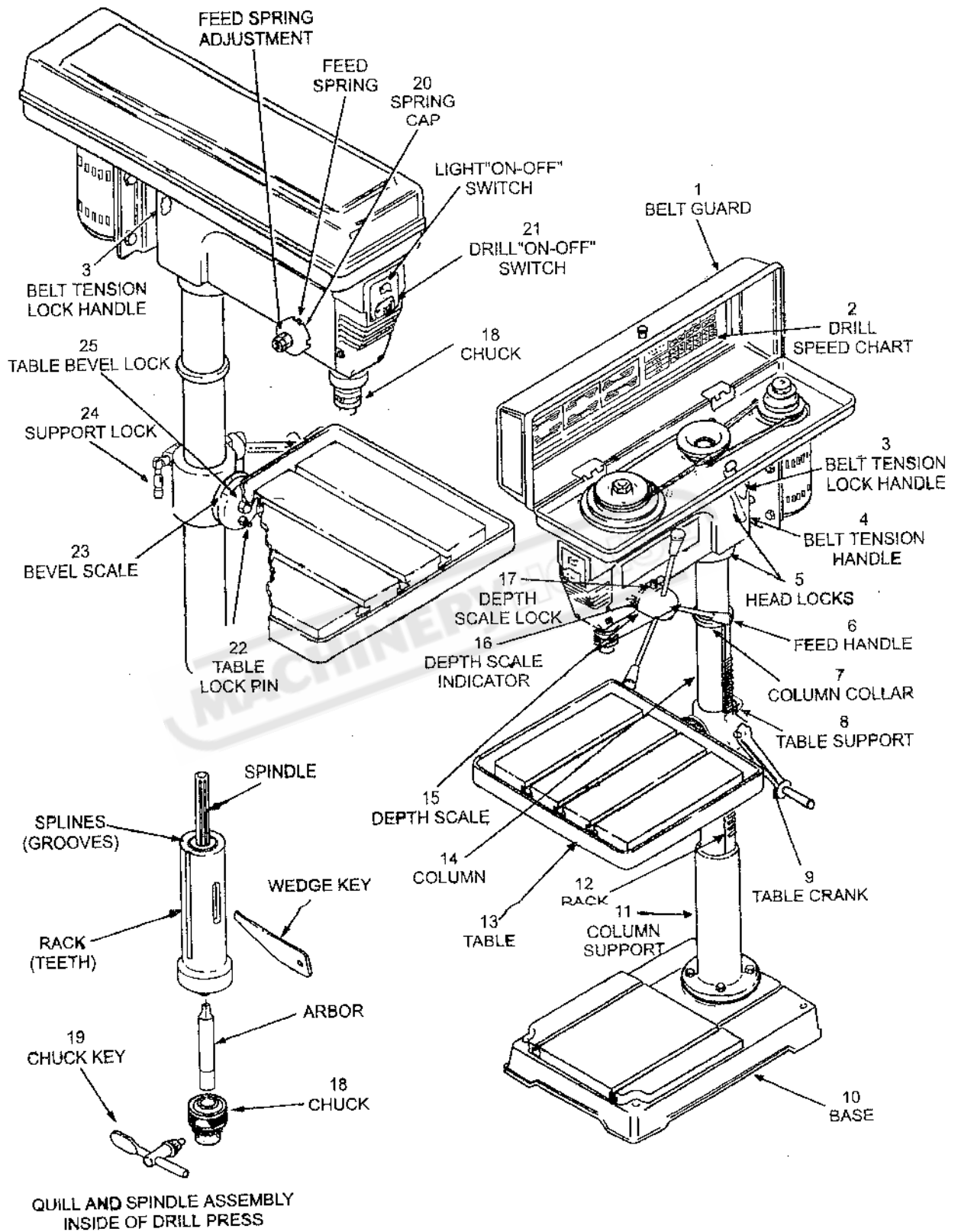


Belt "V" A33 (1)



Key-switch (1)

IV Getting to know your drill press

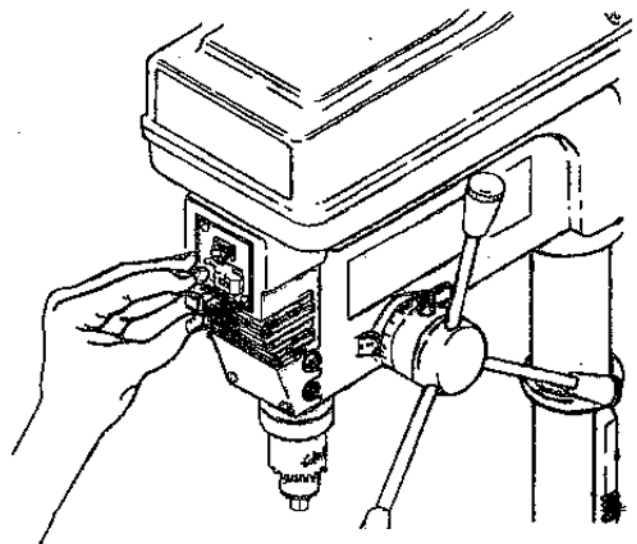


Feature Descriptions

1. **BELT GUARD ASSEMBLY...** Covers pulleys and belt during operation of press.
2. **DRILLING SPEED CHART...** Can be changed by placing the belt in any of the STEPS (grooves) in the pulleys. See Spindle Speed label inside belt guard.
To determine the approximate drilling speed, refer to the table inside the belt guard.
3. **BELT TENSION LOCK HANDLES...** Tightening handles locks motor bracket support and BELT TENSION HANDLE to maintain correct belt distance and tension.
4. **BELT TENSION HANDLE...** Turn handle counter clockwise to apply tension to belt, turn handle clockwise to release belt tension.
5. **HEAD LOCKS...** Lock the head to the column. ALWAYS have them locked in place while operating the drill press.
6. **FEED HANDLE...** For moving the quill up or down. One or two may be removed if necessary whenever the workpiece is of such unusual shape that it interferes with the handles.
7. **COLUMN COLLAR...** Holds the rack to the column. Rack remains movable in collar to permit table support movements.
8. **TABLE SUPPORT...** Rides on column to support arm and table.
9. **TABLE CRANK...** Turn clockwise to elevate table. Support lock must be released before operating crank.
10. **BASE...** Supports Drill Press. For additional stability, holes are provided in base to bolt Drill Press to floor.
11. **COLUMN SUPPORT...** Supports column, guides rack, and provides mounting holes for column to base.
12. **RACK...** Combines with gear mechanism to provide easy elevation of table by hand operated table crank.
13. **TABLE...** Provides working surface to support workpiece.
14. **COLUMN...** Connects head, table, and base on a one-piece tube for easy alignment and movement.
15. **DEPTH SCALE...** Shows depth of hole being drilled.
16. **DEPTH SCALE INDICATOR...** Indicates drilling depth selected on depth scale.
17. **DEPTH SCALE LOCK...** Locks the depth scale to selected depth.
18. **CHUCK...** Holds drill bit or other recommended assortment to perform desired operations.
19. **CHUCK KEY...** It is a self-ejecting chuck key which will "pop" out of the chuck when you let go of it. This action is designed to help prevent throwing of the chuck key from the chuck when power is turned "ON". Do not use any other key as a substitute, order a new one if damaged or lost.
20. **SPRING CAP...** Provides means to adjust quill spring tension.
21. **DRILL "ON-OFF" SWITCH...** Has locking feature. THIS FEATURE IS INTENDED TO HELP PREVENT UNAUTHORIZED AND POSSIBLE HAZARDOUS USE BY CHILDREN AND OTHERS.
22. **TABLE LOCK PIN...** Acts as an indexing pin to locate the table at a 90° angle to the drill and chuck.
23. **BEVEL SCALE...** Shows degree table is tilted for bevel operations. Scale is mounted on top of arm.
24. **SUPPORT LOCK...** Tightening locks table support to column. Always have it locked in place while operating with Drill Press.
25. **TABLE BEVEL LOCK...** Locks the table in any position from 0 - 45°.
26. **BELT TENSION...** Refer to section "Assembly - in - stalling and Tensioning Belt".

Insert KEY into switch.

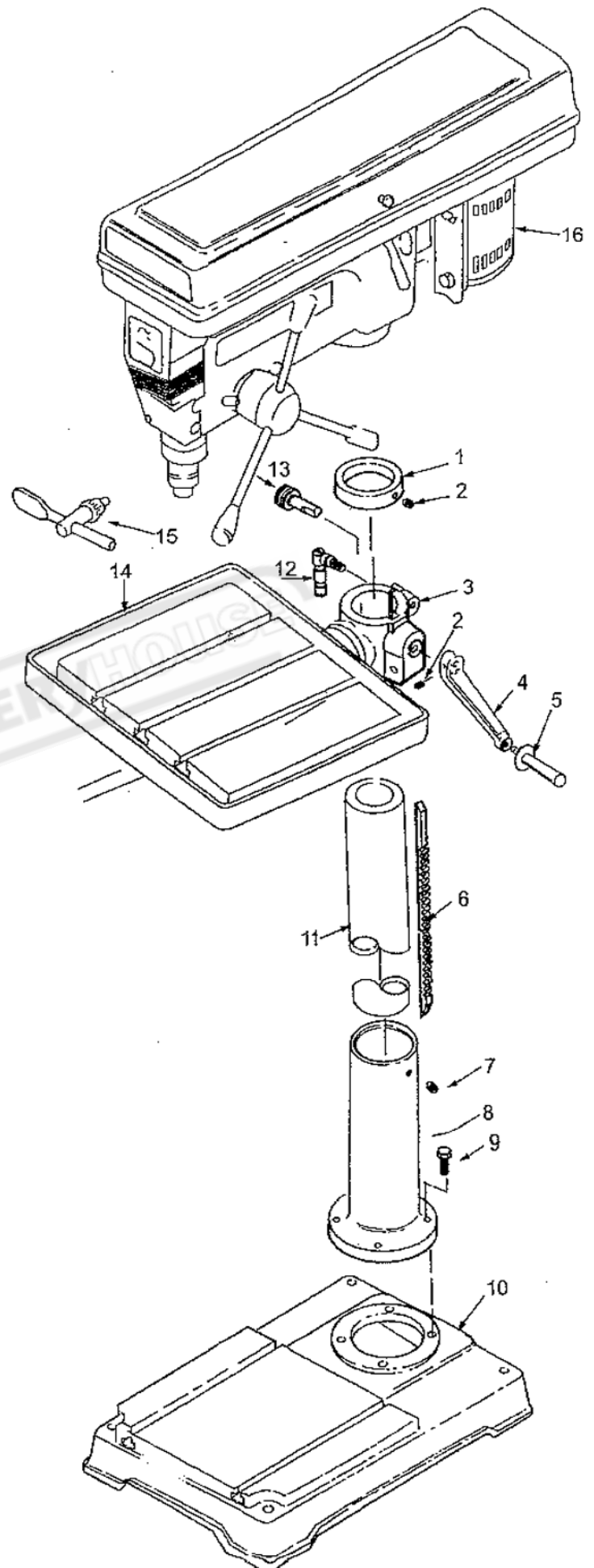
NOTE: Key is made of yellow plastic.



ASSEMBLY

Refer to the figure, install all parts correctly, tighten the screws and bolts securely

Key No.	Part No.	Description
1	20101011	Collar - Rack
2	GB80 - 85	Screw - Hex Soc Set M6×10
3	20101004	Support - Table w/Indicator
4	20101009-1	Crank
5	20101009	Handle - Crank
6	20101010	Rack
7	GB80 - 85	Screw - Hex Soc Set M10×12
8	20101002	Support - Column
9	GB5781-86	*Screw - Hex HD M12× 40
10	20101001	Base
11	20101003	Tube - Column
12	16101012	Pin - Table Lock
13	20101008	Worm - Elevation
14	20101014	Table - Drill Press w/Scale
15	20103010	Key - Chuck
16		Head ASM See Repair Parts



VI Trouble shooting

WARNING: For your own safety, turn switch "OFF" and always remove plug from power source outlet before trouble shooting.

TROUBLE	PROBABLE CAUSE	REMEDY
Noisy Operation	<ol style="list-style-type: none"> 1. Incorrect belt tension. 2. Dry Spindle. 3. Loose spindle pulley. 4. Loose motor pulley. 	<ol style="list-style-type: none"> 1. Adjust tension, See section. 2. Lubricate spindle. 3. Checking tightness of retaining nut on pulley. 4. Tighten set screws in pulleys.
Drill bit burns	<ol style="list-style-type: none"> 1. Incorrect speed. 2. Chips not coming out of hole. 3. Dull drill bit. 4. Feeding too slow. 5. Not lubricated. 	<ol style="list-style-type: none"> 1. Change speed. See section "Getting To know Your Drill Press"... DRILLING SPEED. 2. Retract drill bit frequently to clear chips. 3. Resharpen drill bit. 4. Feed fast enough...allow drill bit to cut. 5. Lubricate drill bit with cutting or motor oil.
Drill bit leads off... hole not round.	<ol style="list-style-type: none"> 1. Hard grain in wood or lengths of drill bit cutting lips and / or angles not equal. 2. Bent drill bit. 	<ol style="list-style-type: none"> 1. Resharpen drill bit correctly. 2. Replace drill bit.
Wood splinters on underside.	<ol style="list-style-type: none"> 1. No "back-up material" under workpiece. 	<ol style="list-style-type: none"> 1. Use "back-up material"
Workpiece torn loose from hand.	<ol style="list-style-type: none"> 1. Not supported or clamped properly. 	<ol style="list-style-type: none"> 1. Support workpiece or clamp it
Drill bit binds in workpiece.	<ol style="list-style-type: none"> 1. Workpiece pinching drill bit or excessive feed pressure. 2. Improper belt tension. 	<ol style="list-style-type: none"> 1. Support workpiece or clamp it. 2. Adjust tension.
Excessive drill bit runout or wobble.	<ol style="list-style-type: none"> 1. Bent drill bit. 2. Worn spindle bearings. 3. Drill bit not properly installed in chuck. 4. Chuck not properly installed. 	<ol style="list-style-type: none"> 1. Use a straight drill bit. 2. Replace bearings. 3. Install drill bit properly. 4. Install chuck properly...
Quill Returns too slow or too fast.	<ol style="list-style-type: none"> 1. Spring had improper tension. 	<ol style="list-style-type: none"> 1. Adjust spring tension.
Chuck will not stay attached to spindle. It falls off when trying to install it.	<ol style="list-style-type: none"> 1. Dirty, grease, or oil on the tapered inside surface of chuck or on the spindles tapered surface. 	<ol style="list-style-type: none"> 1. Using a household detergent-clean the tapered surfaces of the chuck and spindle to remove all dirt, grease and oil.

VII Maintenance

WARNING: For your own safety, turn switch "OFF" and remove plug from power source outlet before maintaining or lubricating your drill press.

Frequently blow out any dust that may accumulate inside the motor.

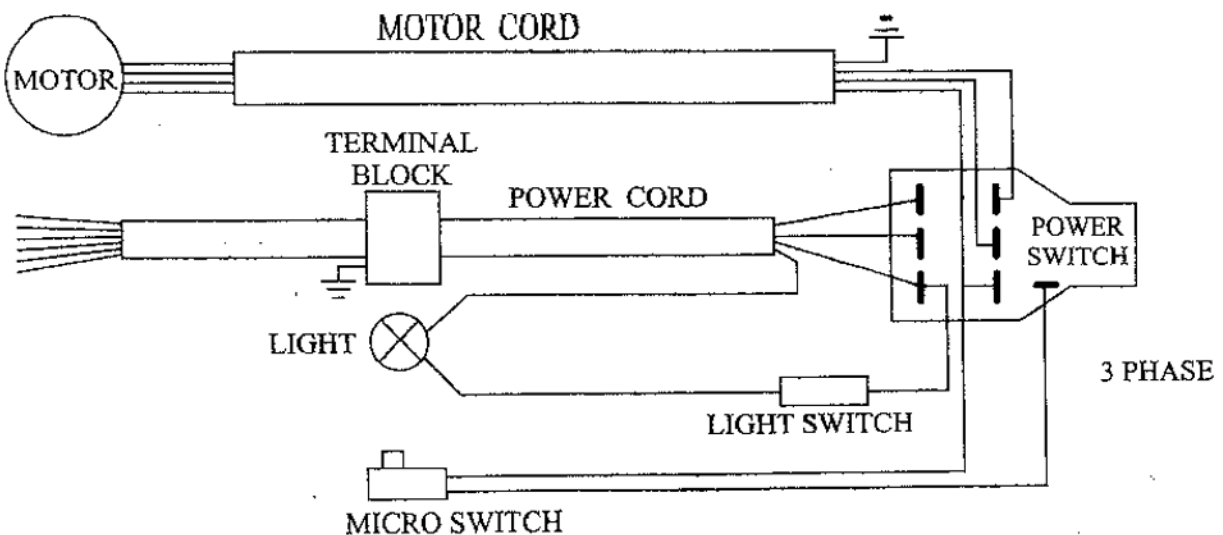
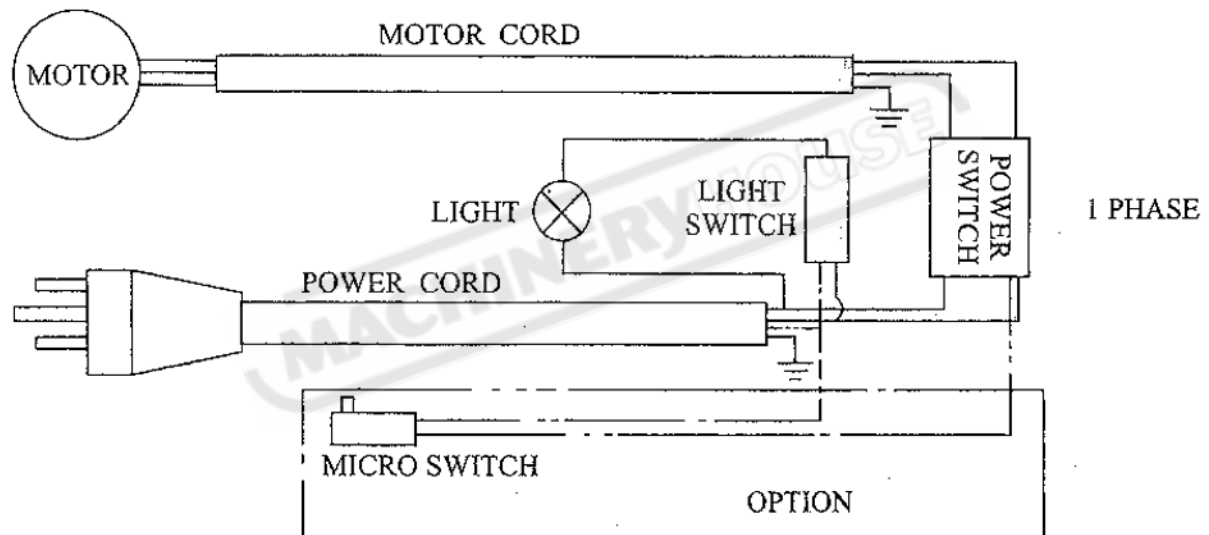
A coat of automotive type paste wax applied to the table and column will help to keep the surfaces clean.

WARNING: To avoid shock or fire hazard, if the power cord is worn or cut, or damaged in any way, have it replaced immediately.

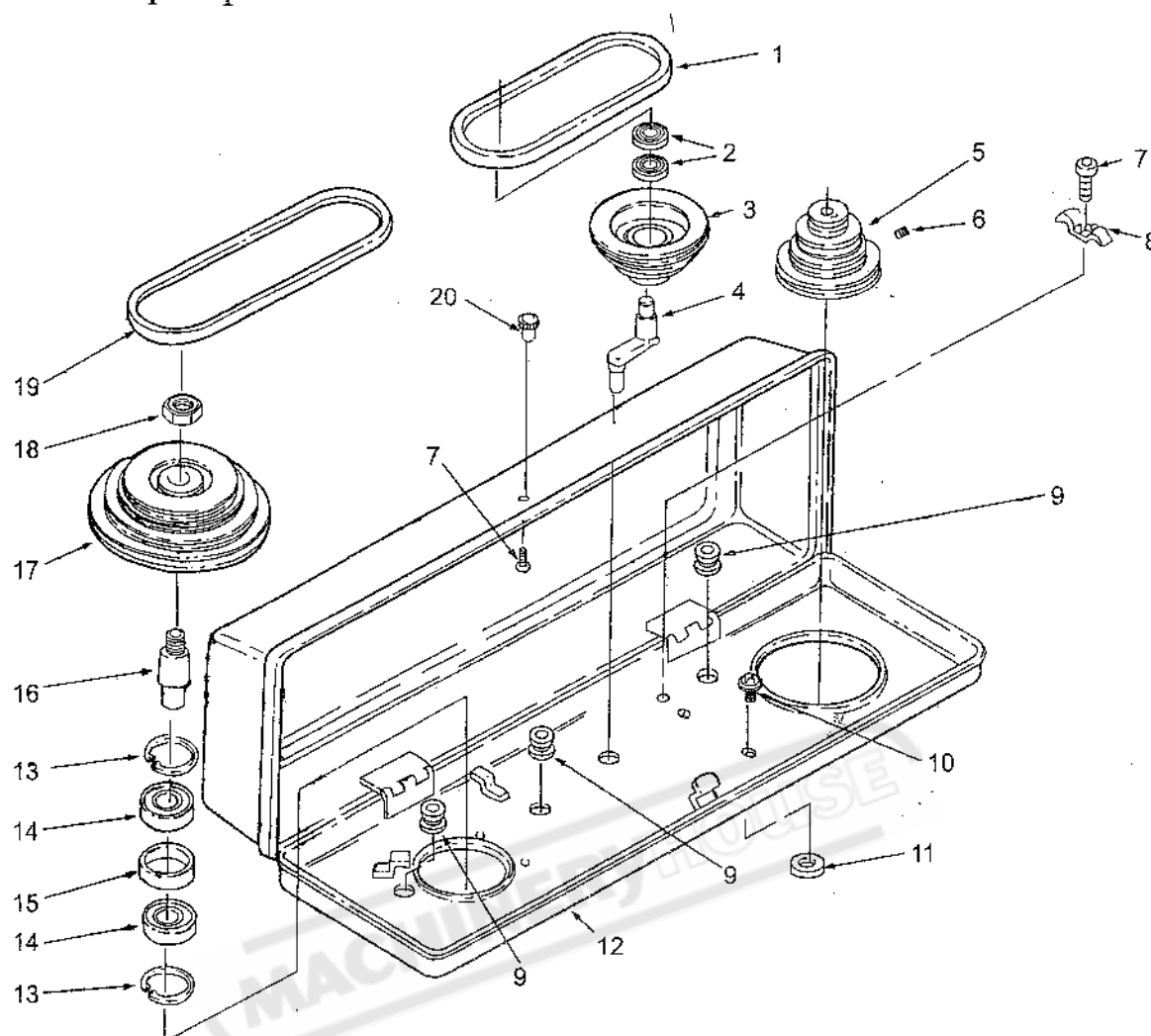
lubrication

All of the BALL BEARINGS are packed with grease at the factory. They require no further lubrication. Periodically lubricate the gear and rack, table elevation mechanism, the SPLINES (grooves) in the spindle, and the RACK (teeth of the quill), See "Getting to Know Your Drill Press."

wiring diagram



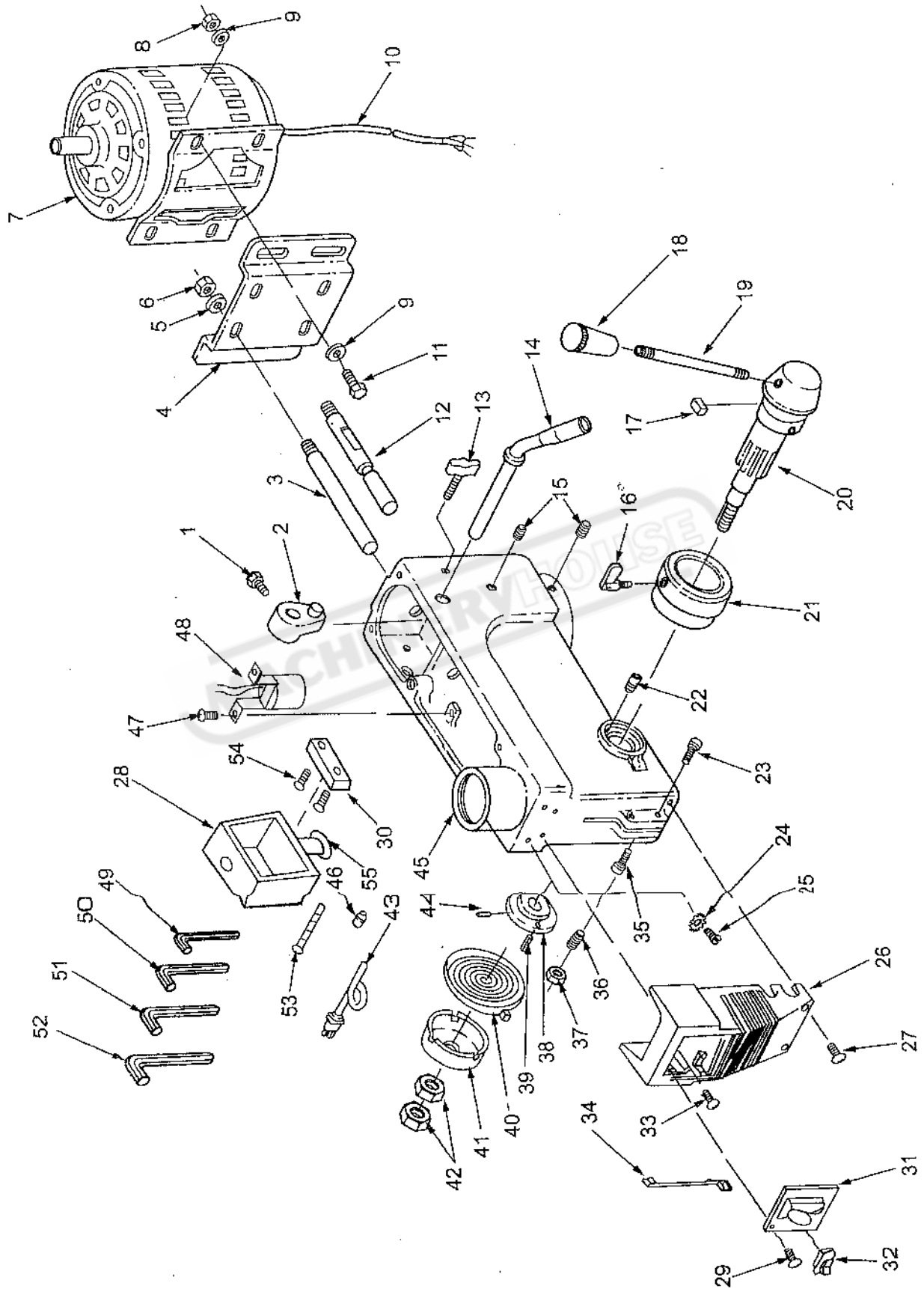
VIII Repair parts



PARTS LIST

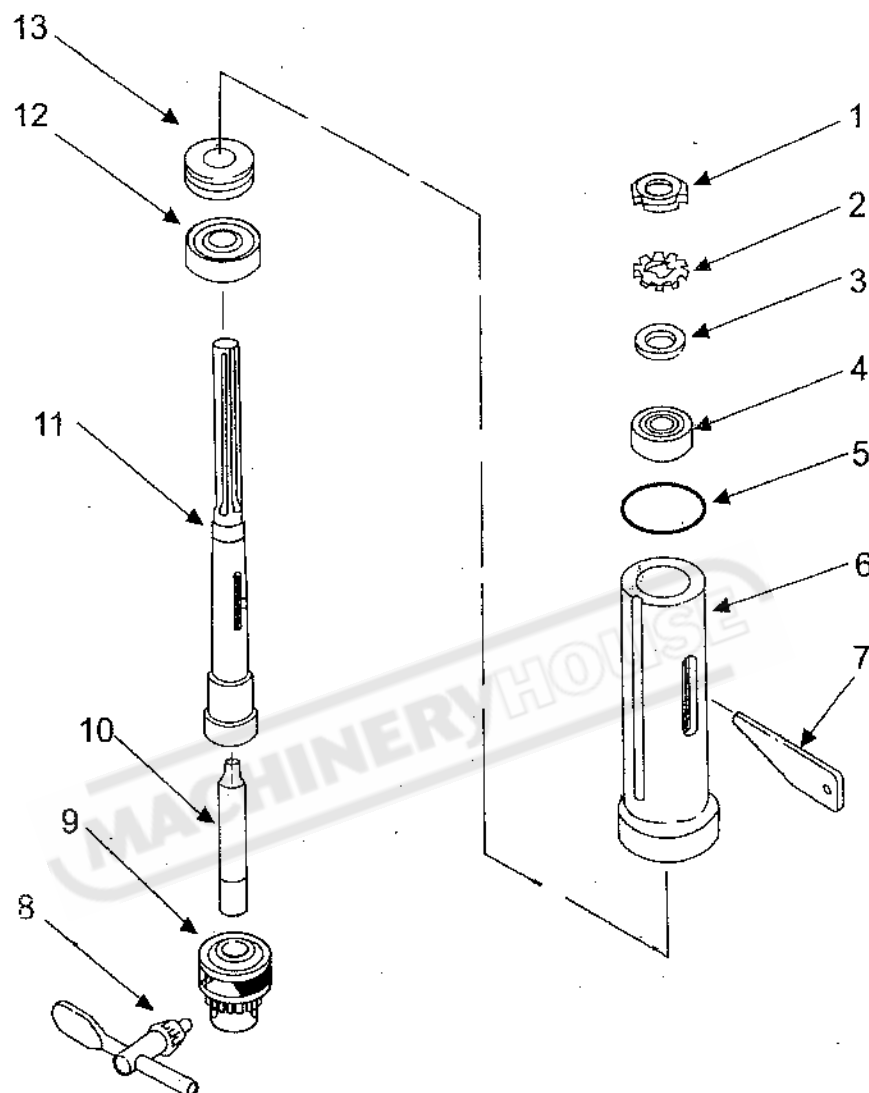
Item	Description	Part No.	Item	Description	Part No.
1	"1" Belt A29	16205011	12	Pulley Cover w/Labels	20105000
2	Ball Bearing 15mm	60202	13	Retaining Ring	20102024
3	Centre Pulley -	20105006	14	Ball Bearing 30mm	60206
4	Idler Pivot	20105007	15	Bearing Spacer	20102023
5	Motor Pulley -	20105005	16	Pulley Insert	20102022
6	Skt screw Set M8×12	GB80 - 85	17	Pulley Spindle -	20105009
7	Pan Hd. Screw M5×12	GB818 - 85	18	Pulley Nut	20102025
8	Cable Clamp	16102014	19	"V" Belt A33	20105010
9	Rubber Bushing	20105012	20	KNOB	16105008
10	Screw Rd. Washer Hd M6×12	GB9074.1-88			
11	Foam Washer	13105009			

VIII Head Assembly



Item	Description	Part No.	Item	Description	Part No.
1	Hex.Hd Screw M8×16	GB5781-86	28	Terminal Block	20102030
2	Adjusting Lever	16102006	29	Self Tap Screw ST4.2×9.5	GB845 - 85
3	Motor Bracket Support	20102003	30	Termination Block	20102031
4	Motor Mounting	16102007	31	Switch	
5	Lockwasher 12	GB93-87	32	Light Switch	RF1001
6	Hex. Nut. M12	GB6170-86	33	Pan Hd Screw M6×15	GB818 - 85
7	Motor	20102020	34	Lead 3"	16102018
8	Hex. Nut. M8	GB6170-86	35	Skt. Hd. Screw Cap M8×25	GB70 - 85
9	Washer 8	GB97.1-85	36	Special Screw Set M10	16102021
10	Motor Cable	20102016	37	Hex Nut. M10	GB6170 - 86
11	Hex. Screw M8×40	GB5781-86	38	Quill Spring Seat	20104006
12	Motor Bracket Support	20102002	39	Roll Pin 6×16	GB879 - 86
13	Belt Tension Lock Knob	16102005	40	Quill Spring	20104008
14	Belt Tension Lever	20102004	41	Spring Cap	20104007
15	Skt. Screw Set M10×12	GB80-85	42	Hex. Nut. M12×1.5	GB6173 - 86
16	Depth Screw Lock	16104012	43	Power cable	20102015
17	Scale guide	16104004	44	Roll Pin 2.5 - 10	GB879 - 86
18	Knob	20104011	45	Head w/ Pointer & Trim	20102001
19	Feed Handle	20104005	46	Connector Wire	13302019
20	HUB ASM	20104000	47	Pan Cr Screw M6×12	GB818 - 85
21	Depth Stop Collar/w/Scale	16104003	48	Bulb Socket	16102013 - 1A
22	Stop Pin	16104010	49	Allen Key 3	GB5356 - 85
23	Skt. Screw Hd. M8×30	GB70-85	50	Allen Key 4	GB5356 - 85
24	Lockwasher Ext. M5	GB862.1-87	51	Allen Key 5	GB5356 - 85
25	Pan Hd. Screw M5×6	GB818-85	52	Allen Key 6	GB5356 - 85
26	Switch Box	20102008	53	Pan Hd Screw M5×35	GB818 - 85
27	Pan Hd Screw Cr M6×35	GB823-85	54	Pan Hd Screw M4×6	GB818 - 85
			55	Strain Relief	20102032

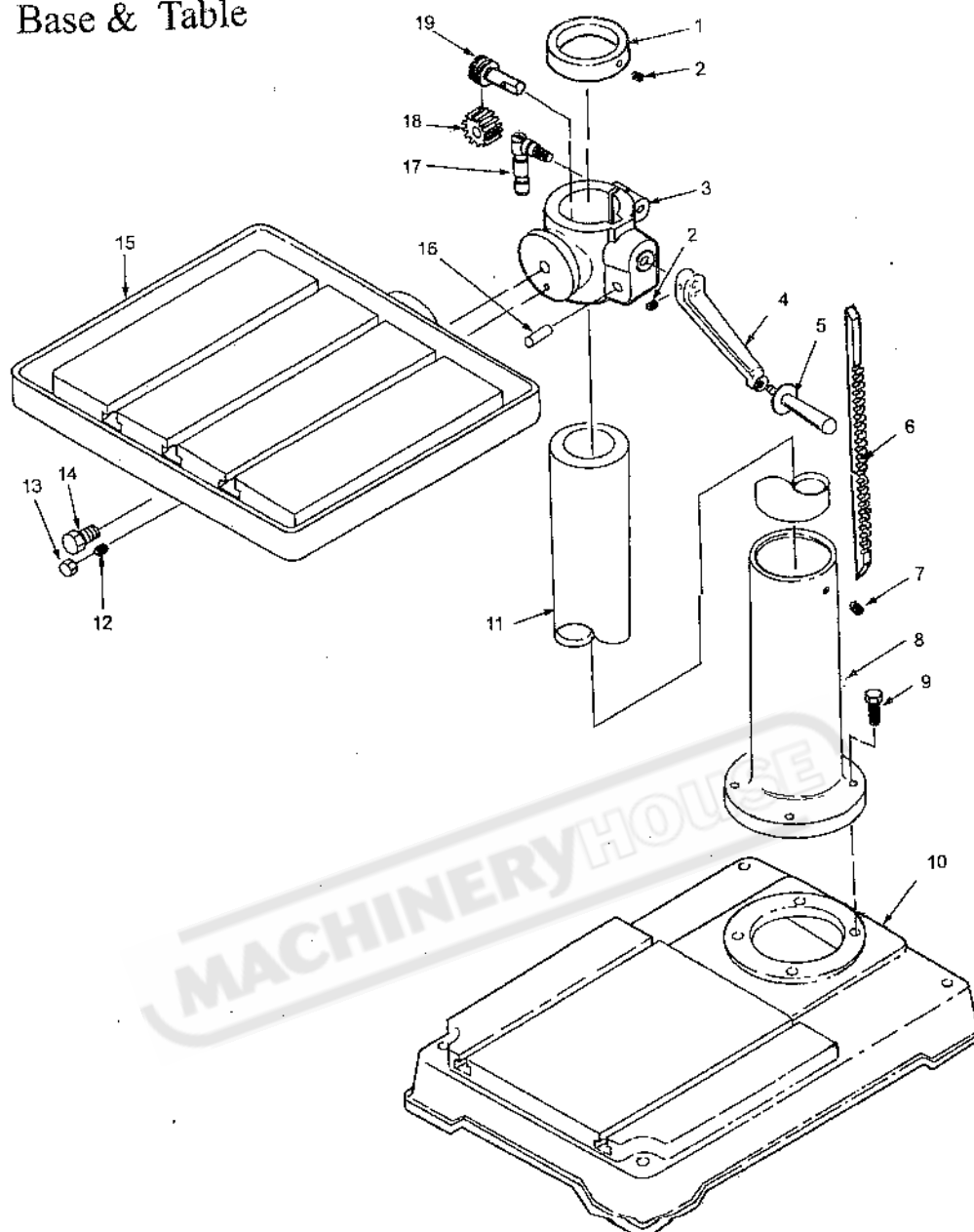
VIII Quill & Spindle Shaft



PARTS LIST

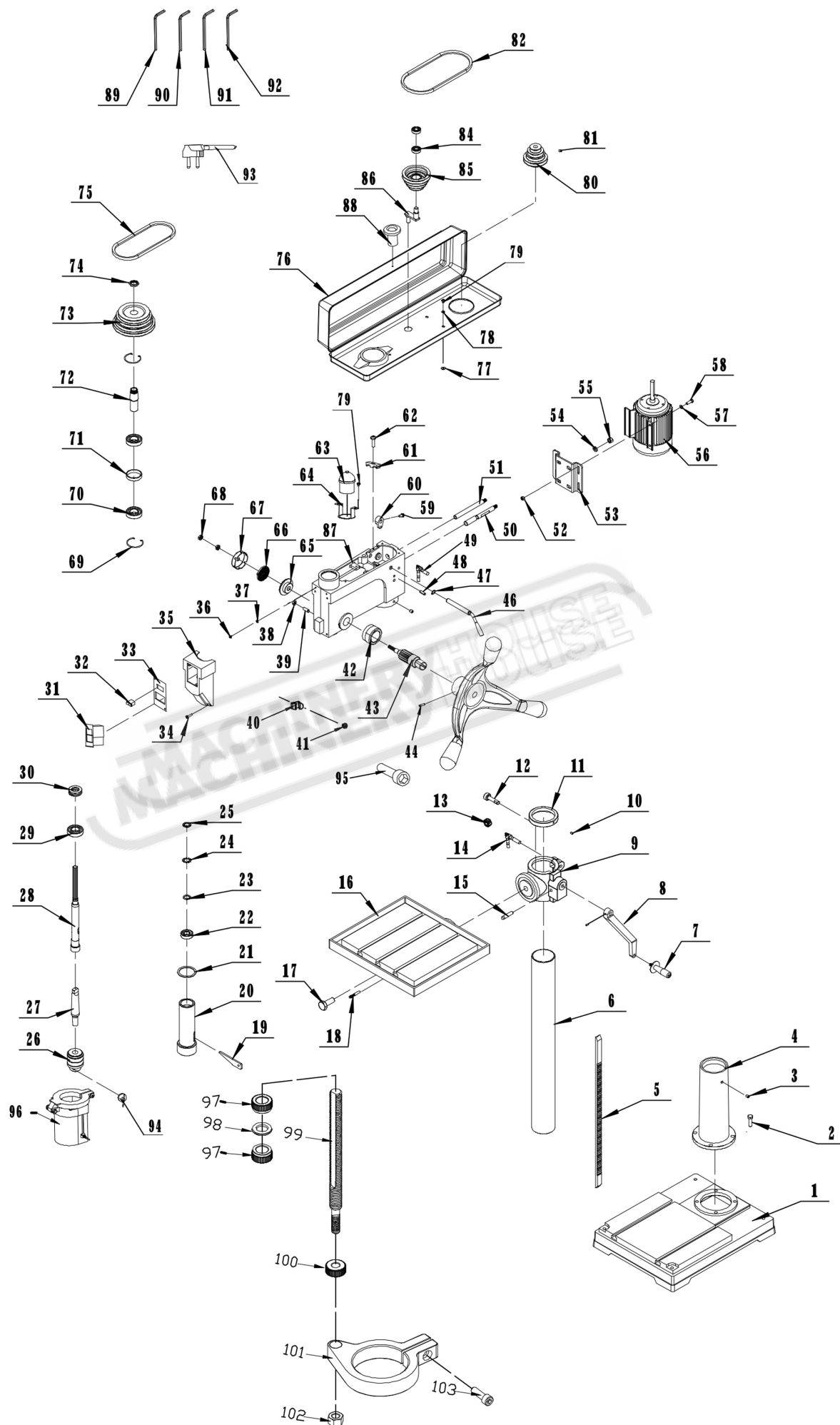
Item	Description	Part No.	Item	Description	Part No.
1	Lock Nut M20×1.5	20103005	8	Chuck Key	20103010
2	Locking Ring	20103004	9	Chuck	20103009
3	Washer	20103003	10	Arbour	20103007
4	Ball Bearing 20mm	60204	11	Spindle	20203001
5	Rubber Washer	20103006	12	Ball Bearing 30mm	60206
6	Quill	20103002	13	Bearing - Thrust	8706
7	Wedge Drift	16103008			

VIII Base & Table



PARTS LIST

Item	Description	Part No.	Item	Description	Part No.
1	Collar	20101011	11	Column	20101003
2	Hex. Skt Screw Set M6×10	GB80-85	12	Table Locking Pin	20101015
3	Table Support w/Indicator	20101004	13	Hex. Nut M8	GB6170-86
4	Crank	20101009-1	14	Hex. Hd. Screw M20×50	GB5781-86
5	Crank Handle	20101009	15	Table - w/Scale	20101014
	-2, 3, 4		16	Gear Pin	16101007
6	Rack	20101010	17	Clamp-Column	16101012
7	Hex. Skt Screw Set M10×12	GB80-85C	18	Helical Gear	16101006
8	Column Support	20101002	19	Worm	20101008
9	Hex. Hd Screw M12×40	GB5781-86			
10	Base	20101001			



NO.	DESCRIPTION	PART NO.	Q`TY	NO.	DESCRIPTION	PART NO.	Q`TY
1	BASE	20101001	1	52	NUT-HEX GB6170-86	M8	4
2	HEX.HD SCREW GB5781-86	M12×40	4	53	MOTOR MOUNT	20102007	1
3	HEX.SOC SCREW GB80-85	M10×12	2	54	LOCK WASHER GB93-87	12	2
4	SUPPORT COLUMN	20101002	1	55	NUT-HEX GB6170-86	M12	2
5	RACK	20101010	1	56	MOTOR	YC90L4-08	1
6	COLUMN TUBE	20101003	1	57	WASHER GB97.2-85	8	8
7	HANDGRIP	20101009	1	58	HEX.HD SCREW GB5781-86	M8×25	4
8	CRANK	20101009-1	1	59	HEX.HD SCREW GB5781-86	M8×16	1
9	TABLE SUPPORT	20101004	1	60	LEVER ADJUSTING	16102006	1
10	HEX.SOC SCREW GB80-85	M6×10	2	61	CLAMP CORD	16102014A	1
11	COLLOR RACK	20101011	1	62	SCREW PAN GB818-85	M5×10	1
12	WORM	20101008	1	63	SOCKET BYLB	16102013-1B	1
13	GEAR HELICAL	16101006	1	64	BRACKET BULB SOCKET	16102013-2A	1
14	CLAMP TABLE	16101012A	1	65	SEAT SPRING	20104006	1
15	GEAR PIN	16101007	1	66	SPRING TENSION	20104008	1
16	TABLE	16201014	1	67	RETAINER SPRING	20104007	1
17	HEX.HD SCREW GB5781-86	M20×50	1	68	NUT-HEX GB6172-86	M12X1.75	2
18	ANNUL TABLE	20101015	1	69	RING RETAINING	20102024	2
19	KEY DRIFT	16103008	1	70	BEARING BALL GB276-89	60206	2
20	TUBE QUILL	20103002A	1	71	SPACER	20102023A	1
21	GASKET QUILL	20103006	1	72	PULLEY INSERT	20102022	1
22	BEARING BALL GB276-89	80204	1	73	PULLEY SPINDLE	20105009C	1
23	WASHER	20103003	1	74	LEFT-NUT	20102025	1
24	RING LOCKING	20103004	1	75	V-BELT	201050010E	1
25	LOCK NUT	20103005	1	76	GUARD	20105000D	1
26	CHUCK	16103009G	1	77	CIRCLE-RUBBER	13105009	4
27	ARBOR	20103007	1	78	WASHER GB97.2-85	6	4
28	SHAFT SPINDLE	20103001	1	79	SCREW PAN GB818-85	M6×8	6
29	BEARING BALL GB276-89	80206	1	80	PULLEY MOTOR	20105005K	1
30	THRUST BEARING GB301-88	8706	1	81	HEX.HD SCREW GB5781-86	M8×12	1
31	SWITCH	CK-1	1	82	V-BELT	16205011A	1
32	SWITCH ROCKER	16102012C	1	84	BEARING BALL GB276-89	60202	2
33	SWITCH PLATE	20102009N	1	85	MIDDLE PULLEY	20105006C	1
34	SCREW PAN GB818-85	M5×16	4	86	MIDDLE AXLE	20105007	1
35	BOX-SWITCH	20102008A	1	87	HEAD	20102001K	1
36	SCREW PAN HD.GB818-85	M5×6	2	88	KNOB	16105008	1
37	STAR WASHER GB862.1-85	5	2	89	WRENCH HEX"L" GB5356-85	S3	1
38	NUT-HEX GB6172-86	M10	1	90	WRENCH HEX"L" GB5356-85	S4	1
39	SOCKET SET SCREW	16102021	1	91	WRENCH HEX"L" GB5356-85	S5	1
40	NIP-KEY	16103011	1	92	WRENCH HEX"L" GB5356-85	S6	1
41	SCREW PAN HD.GB818-85	M5×10	1	93	CORD&PLUG	DLCMFF3Z13	1
42	DEPTH STOP RING	16104003C	1	94	KEY-CHUCK	16103009G-1	1
43	SHAFT PINION	201104002B	1	95	SCREW PAN GB70-85	M8X40	1
44	ROLL PIN GB119-86	6X16	1	96	EYE-SHIELD	20108002	1
45	HANDLE	20104001D	1	97	adjusted nut	16108005-6	2
46	HANDLE BELT TENSION	20102004	1	98	stop washer	16108005-4	1
47	RETAINING RING GB894.1-86	186	1	99	adjust	201108005-5	1
48	ROLL PIN GB879-86	φ 6× 25	2	100	lock nut	16108005-2	1
49	KNOB MOTOR ADJUST	16101013D	2	101	collar	20108005-1	1
50	MOTOR SUPPORT BRA (R	20102003	1	102	NUT-HEX GB170-86	M10	1
51	MOTOR SUPPORT BRA (L	20102002	1	103	SCREW PAN GB70-85	M8X30	1